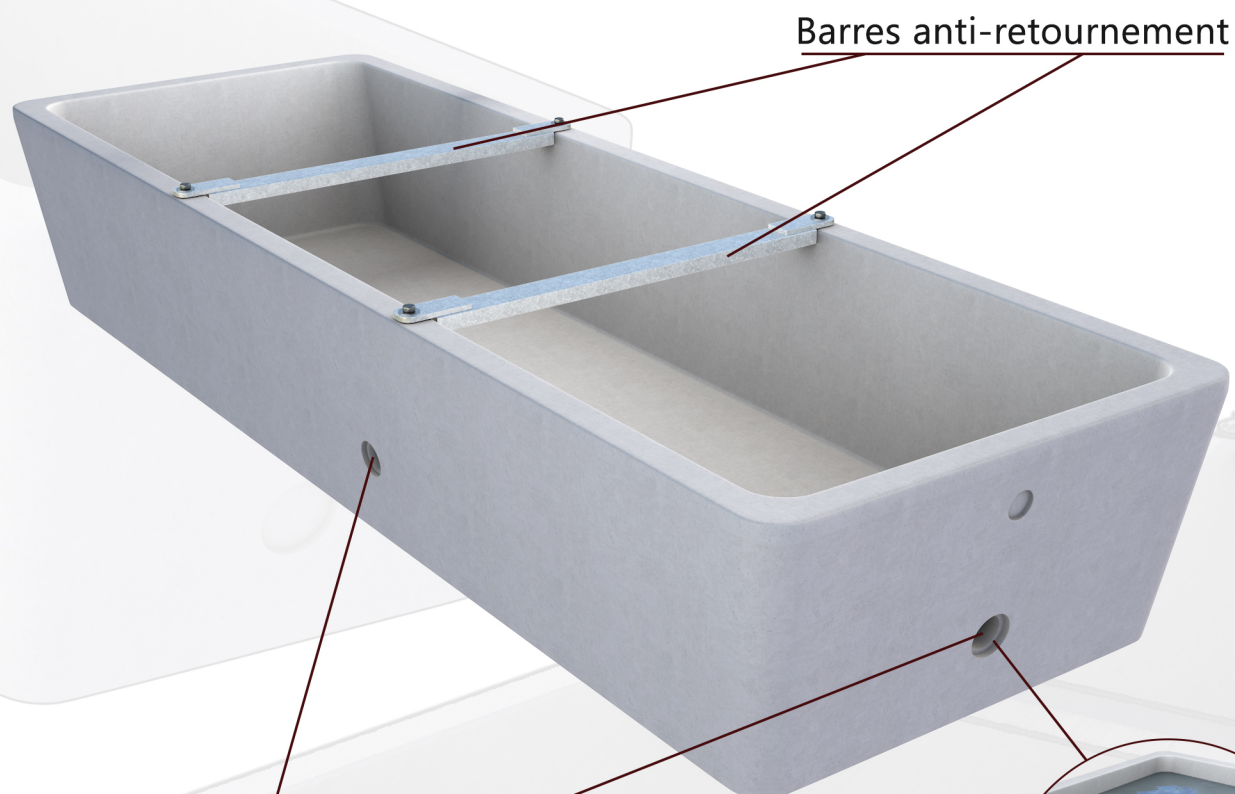
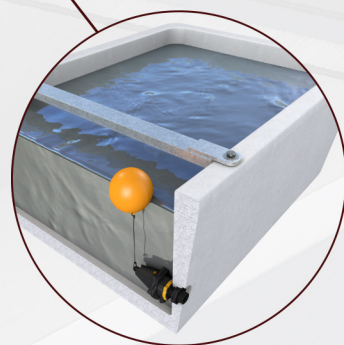


SOCAMAC



Barres anti-retournement

Pré-perçages flotteur



Abreuvoirs

SOCAMACMATERIAUX.COM

Diamètre des pré-perçages et de la vidange



Longueurs disponibles



Long.	Poids	Lt.
100 cm	260kg	120
Haut : 50 cm		
Larg : $L1$ --> 65 cm - $L2$ --> 55 cm		



Long.	Poids	Lt.
200 cm	490kg	360
Haut : 50 cm		
Larg : $L1$ --> 65 cm - $L2$ --> 55 cm		

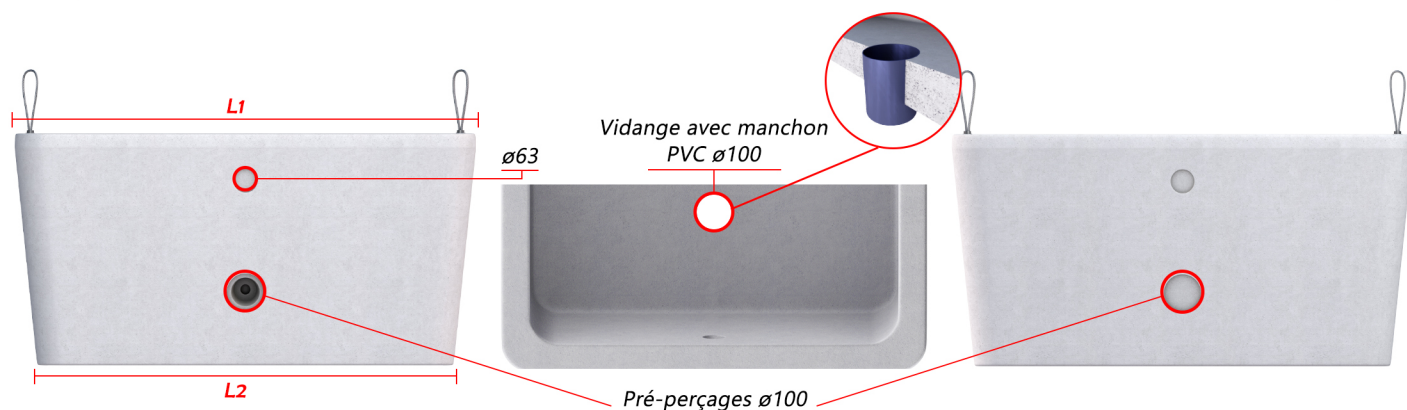


Long.	Poids	Lt.
300 cm	700kg	550
Haut : 50 cm		
Larg : $L1$ --> 65 cm - $L2$ --> 55 cm		



Long.	Poids	Lt.
400 cm	1090kg	800
Haut : 51 cm		
Larg : $L1$ --> 67 cm - $L2$ --> 57 cm		

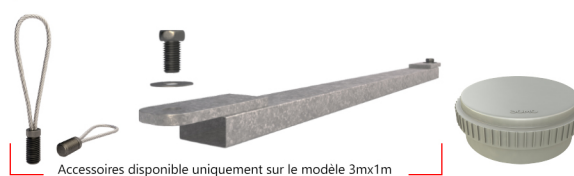
Diamètre des pré-perçages et de la vidange



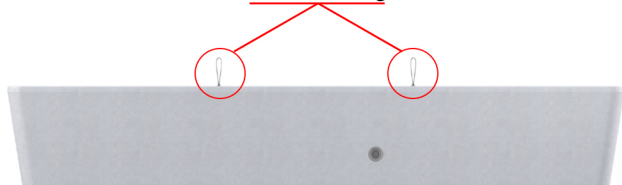
Longueur disponible

Long.	Poids	Lt.
300 cm	1200kg	1000
Haut : 55 cm		
Larg : L1 --> 100 cm - L2 --> 90 cm		

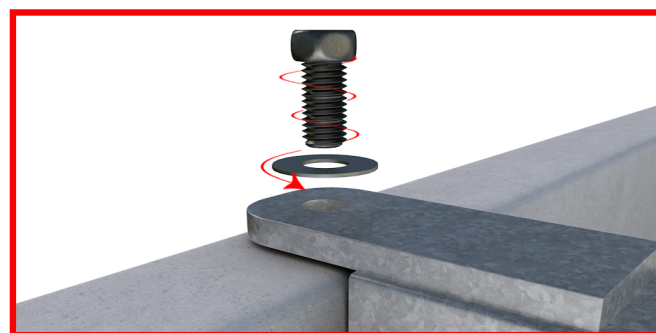
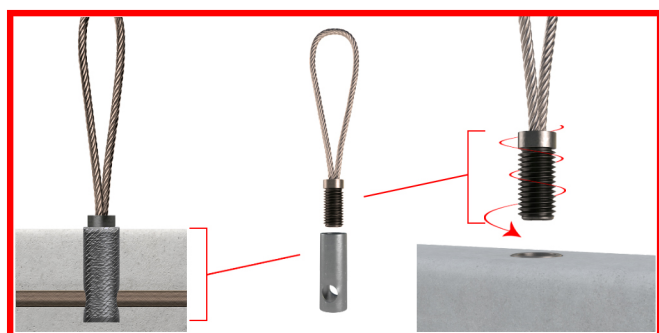
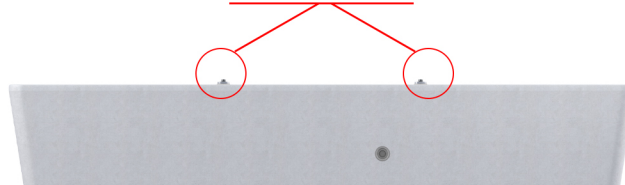
Accessoires vendus séparément



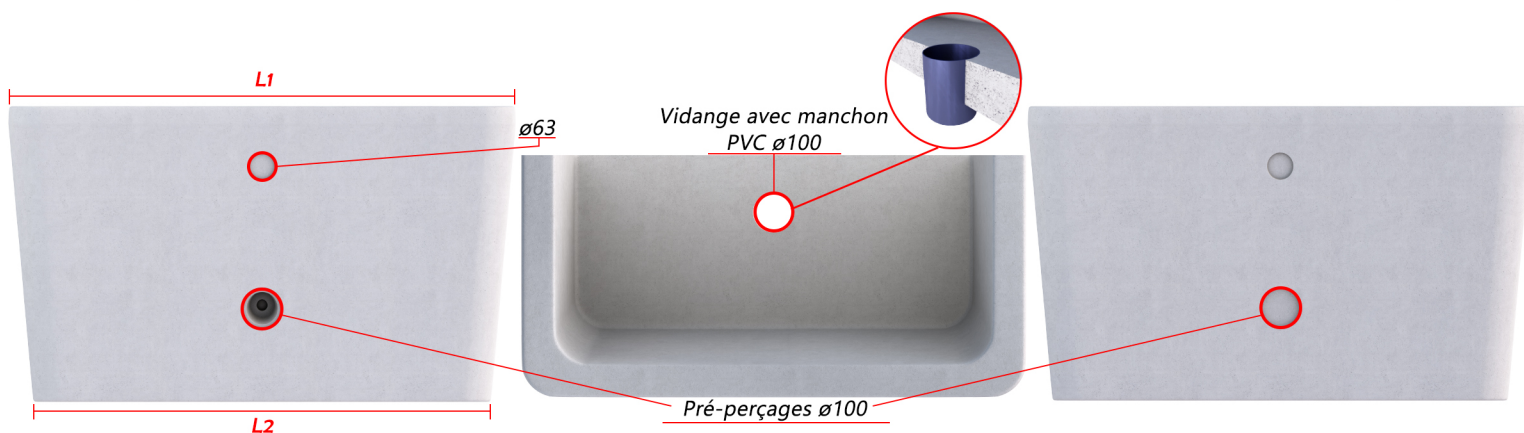
Cables de levage



Barres anti retournement



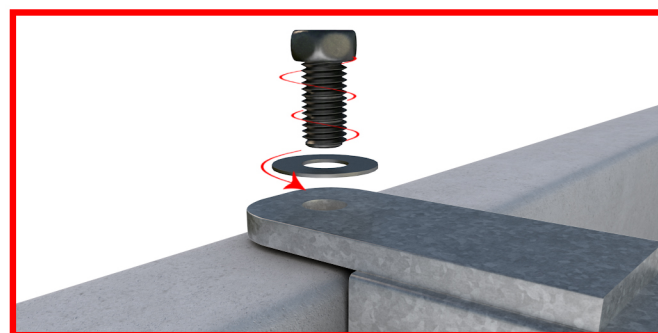
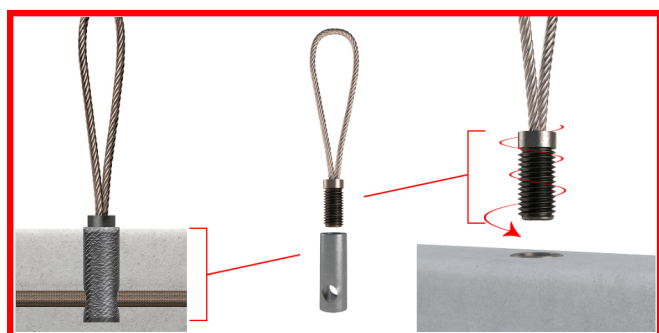
Diamètre des pré-perçages et de la vidange

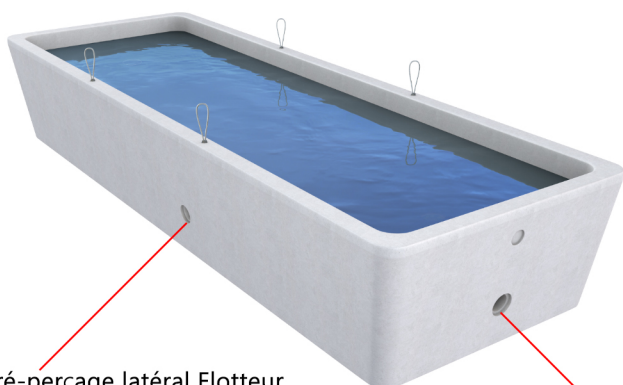
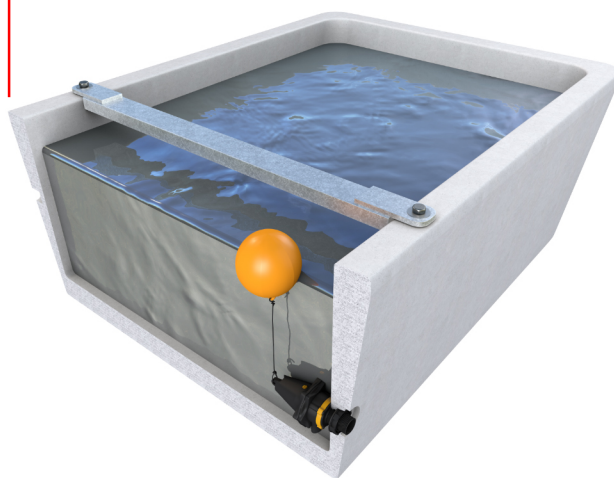
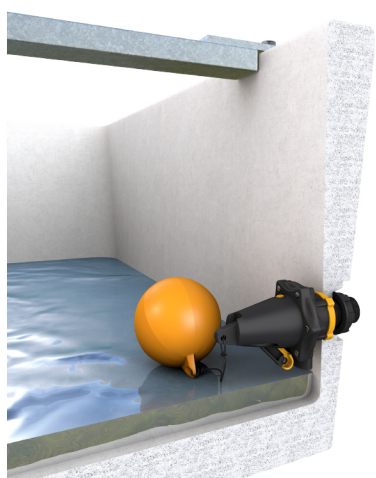


Longueur disponible

Long.	Poids	Lt.
350 cm	1800kg	2000
Haut : 70 cm		
Larg : $L1 \rightarrow 120$ cm - $L2 \rightarrow 110$ cm		

Accessoires vendus séparément





Pré-perçage latéral Flotteur

Pré-perçage frontal Flotteur

La montée du ballon coupe l'arrivée d'eau.

